



## Wireless Access System

C•CURE 9000 integration with OMNILOCK wireless portals and readers

### Features That Make a Difference:

- Wireless readers communicate with C•CURE 9000 via portal gateways eliminating the need for separate door controllers
- Card database and intelligent decision-making reside at the reader
- Portal gateway communicates with the C•CURE 9000 via Ethernet
- Readers connect to the portal gateway via AES 128-bit encryption ensuring a secure wireless connection
- Supports 2,000 cardholders per wireless reader at one time
- Reader powered by four AA Alkaline batteries
- Supports magnetic stripe (Track 2, 16 digits) and Proximity HID 125 KHz card formats
- Capable of running Microsoft Secure Socket Layer (SSL) between the portal gateway and C•CURE 9000 host
- Readers feature the Best® Interchangeable Lock Core providing security and convenience
- Americans with Disabilities Act (ADA) compliant
- FCC Class B Part 15 approved
- Perfect for dorm rooms, elevators, gates, entrance doors, computer rooms, electrical closets, offices, and medical laboratories

The Wireless Access System is a smart, easy-to-install wireless access solution that requires no hard wiring at the door and is designed for companies needing to remotely manage access control. Control access to your facilities from a central networked computer, remote workstations, or via VPN-connected systems.

The system is comprised of wireless OMNILOCK portal gateways and wireless readers. Integrated with C•CURE 9000, the Wireless Access System communicates with the readers via a dedicated wireless portal. Each wireless access portal supports from 16 readers to a maximum of 128 total readers for broad spectrum coverage.

Various reader technologies allow you to gain access using either a 3-6 digit keypad ID code or by presenting a HID proximity card or magnetic stripe card.

Using the Wireless Access System, a C•CURE 9000 administrator can log onto the system and monitor the portals/readers from anywhere in the world.

Simple to install and easy to modify in existing facilities, the wireless readers offer the right solution to keep labor costs in check and complete installations within a short period of time.

There's no need for extra wiring – optional door switch monitor, request to exit, and door lock position sensor are all integrated in the wireless reader. There's minimal cutting or drilling required at the door and the OMNILOCK reader installs in industry-standard door configurations.

# features

## Intelligence at the Door

The Wireless Access System is a complete wireless access control solution with intelligence located at the door enabling immediate response time. A separate controller is not necessary since all communication between C•CURE 9000 and each reader is achieved through the portal gateway.

All personnel data is configured in the C•CURE 9000, passed through the portal gateway, and then stored on the reader. You may access a door using a card or keypad PIN only. Keypad PINs range from three to six digits in length and provide an added layer of security. Each user can have only one Wireless Access System credential that is assigned to his or her personnel record at one time. The Wireless Access System supports magnetic stripe (Track 2, 16 digits) and HID proximity 125 KHz cards.

You can control up to 128 wireless readers per portal gateway (32 maximum recommended). Each reader runs on four commercial, off-the-shelf (COTS) AA alkaline batteries which eliminates the need for an external power supply and allows the reader to operate in stand-alone mode in the event of a power failure. Additionally, each reader has a transaction limit of 120,000 entries.

A variety of reader models are available: cylindrical, mortise, quick adapter, wall mount, and exit devices. Each of these readers can be applied to a wide range of applications such as dorm rooms, elevators, gates, entrance doors, computer rooms, electrical closets, offices, and medical laboratories.

## Portal Gateway Communication

The Stanley OMNILOCK portal gateway provides bi-directional RF communication to the wireless readers. This communication device controls from up to 128 wireless access readers depending on the license purchased. Each portal communicates with the C•CURE 9000 host over a wired Ethernet connection to provide personnel and clearance information to each reader. Additional capacity can be added in increments of 16 readers for enhanced expansion capabilities.

Each portal gateway is preprogrammed with a unique MAC address to allow the unit to communicate solely with C•CURE 9000. The 16-channel 802.15.4 protocol allows data-collision-free operation and interoperability in 802.11 WiFi concentrated environments (i.e. universities and hospitals).

Standard antennas on the portal gateway maintain a range of a 100 ft radius from the portal gateway to the reader. The optional directional antennas give 300 x 20 ft of oval coverage providing extensive wireless range.

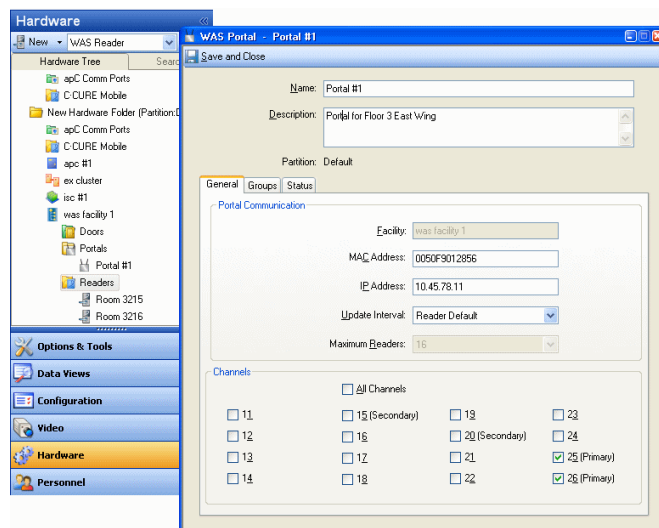
And, you can be sure the system is running smoothly with built-in real-time portal diagnostics that monitor RF signal strength, RF interference, and portal capacity to correct system issues or help to prevent unnecessary system downtime.

## Secure Data Transfer

All communication between the readers and portal gateway is AES 128-bit encrypted using 2.4 GHz spread spectrum RF radio technology. The AES algorithm converts data to an unintelligible form called ciphertext (encryption), and then converts the data back into its original form, called plaintext (decryption), for secure data transfer. For additional security, the system is capable of running Microsoft Secure Socket Layer (SSL) from portal gateways to the C•CURE 9000 host.

## Easy to Configure

The wireless portal is treated like any other type of Software House controller by the C•CURE 9000 system. You can configure the system using common tabs and drop down boxes that are highly intuitive. Readers assigned to a portal gateway are configured via the portal gateway configuration screen. Each reader can be configured to hold a maximum of 2,000 cardholders. Additionally, inputs and outputs for each portal gateway and associated readers are configured via the same dedicated screen.



Each reader comes equipped with dual processors and flash technology to ensure efficient data transfer and allow for wireless firmware upgrades.

# take a closer look

## Redundant Communication

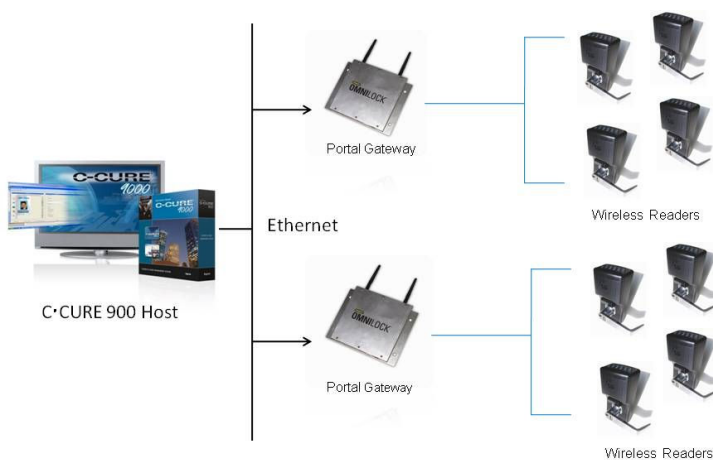
If communication from a reader to a specified portal gateway fails, the reader will connect through another authorized portal with the strongest portal signal. The alternate portal needs additional licensing to support both its configured readers and potential alternate readers. C•CURE 9000 supports the configuration of the alternate portal gateways for any reader and secondary readers.

## Stanley BEST® Interchangeable Core

Each reader comes complete with a temporary Stanley BEST® I/C construction core with standard construction core keying. When the readers are shipped to a specified location, each reader core must be replaced with an advanced masterkey system. A Stanley® Territory Account Manager (TAM) will contact the user to design the advanced masterkey system required for your application. Pertinent customer information is required with each purchase including customer name, address, and whether Stanley BEST cores are currently used. The new masterkey system is shipped to the specified location for easy installation. Simply remove the original core with your system's control key and insert the new core in its place. There is no need for extensive disassembly of any lock or expensive service calls.

## Basic System Diagram

The Wireless Access System is a solid platform that supports up to 2000 cards per reader and provides the ultimate balance between power and affordability in a network environment.



## Ordering Information<sup>1</sup>

### Wireless Readers

- WAS45HOMDVM DVW..... Wireless mortise insert magnetic stripe reader and PIN pad with latch
- WAS45HOMTVMDVW ..... Wireless mortise insert magnetic stripe reader and PIN pad with deadbolt
- WAS45HOMDVPDVW ..... Wireless mortise proximity reader and PIN pad with latch
- WAS45HOMTVPDVW ..... Wireless mortise proximity reader and PIN pad with deadbolt
- WASOMWMSMDVW ..... Wireless wall -mount insert magnetic stripe and PIN pad
- WASOMWMSPDVW ..... Wireless wall -mount proximity reader and PIN pad
- WAS93KOMDVM DVW..... Wireless cylinder insert magnetic stripe reader and PIN pad
- WAS93KOMDVPDVW ..... Wireless cylinder proximity reader and PIN pad
- WASQAXOMMDVW ..... Wireless reader quick adapter for exit devices: proximity reader and PIN pad with latch
- WASQAXOMP DVW ..... Wireless reader quick adapter for exit devices: proximity reader and PIN pad with deadbolt

### Portal Gateway

- WAS-PG ..... Basic portal gateway

### Licenses

- WAS-LIC-RDR-SWH..... Reader license, upgrade option for each additional block of 16 readers with any combination of portal gateways
- WAS-LIC-PORT-SWH..... Portal license, upgrade option for each additional block of 16 readers with any combination of portal gateways
- WAS-LIC-RDR-OUT ..... Reader license for non-Software House purchased readers, upgrade option for each additional block of 16 readers with any combination of portal gateways
- WAS-LIC-PORT-OUT ..... Portal license for non-Software House purchased readers, upgrade option for each additional block of 16 readers with any combination of portal gateways

### Power Adapters

- WAS-TRANS..... Plug-in transformer, 12 VDC output (wall-mount with 15.24 cm (6 in) cable)
- WAS-POE ..... Power over Ethernet supply/insertor
- WAS-POE-SPLT ..... Power over Ethernet active splitter with isolation

(1) For a list of reader options and finishes, refer to the Wireless Access System - How to Order Guide located on the Software House Member Center

## Ordering Information (cont.)

### Conversion Kit

Conversion kit converts OMNIOLOCK non-wireless to wireless

- WAS-12657-01-SWH ..... Conversion kit: wireless circuit board and an RF transceiver antenna kit (non-weatherized)
- WAS-12657-02-SWH ..... Conversion kit: wireless circuit board and an RF transceiver antenna kit (weatherized)

### Testing Kits

- WAS-SURVEY-KIT ..... Site survey kit: portal gateway, telescopic mast with omni directional antenna, 802.11 wireless router, three wireless door beacons, and one pelican case
- WAS-Wi-Spy-2.4x ..... 2.4 GHz wireless network analyzer

### Antennas

- WAS-ACMO ..... 2.4 GHz interior ceiling-mount omni directional antenna kit: antenna, standard mount, and 6.10 m (20 ft) cable to connect to Gateway
- WASAWMD ..... 2.4 GHz interior wall-mount directional antenna kit: antenna, standard mount, and 6.10 m (20 ft) cable to connect to Gateway
- WAS-AEMD ..... 2.4 GHz exterior directional antenna kit: antenna, wall- and post-mounts, and 6.10 m (20 ft) cable to connect to Gateway
- WAS-AEMO ..... 2.4 GHz exterior omni directional mast mount kit: wall- and post-mounts, and 6.10 m (20 ft) cable to connect to Gateway

### Accessories

- WAS-BAT ..... Set of two weatherized battery packs for option W (weatherized) only, -20° to 58° C (-4° to 136° F)
- WAS-12911 ..... Weatherized stainless steel shroud for mortise, cylindrical, wall-mount, or exit trim readers
- WAS-12293 ..... Steel gate adapter, allows OMNIOLOCK cylindrical locks to be installed on custom gates (for Arrow locks)
- WAS-12061 ..... Stainless steel adapter flat plate for cylindrical retrofit (one each)
- WAS-11586 ..... Locknetics cover plate (626) – covers CM-series cylindrical holes
- WAS-3114285 ..... Backside antenna kit

### Wireless Reader

- Spread Spectrum Technology ..... 2.4 GHz
- Encryption ..... AES 128-bit with multi-redundant portal gateway support
- Cardholders per reader ..... 2,000
- Power Supply ..... Four AA batteries or external power operation
- Memory ..... Flash memory (memory retained if power is lost)
- Keypad PINs ..... 3 – 6 digits
- Keypad ID codes ..... 4 – 10 digits
- Card Technologies ..... Magnetic stripe (Track 2, 16 digits) and HID proximity 125 KHz cards
- Compliance ..... FCC and ADA

### Wireless Portal

- Network Interface ..... Ethernet 10/100Base-T
- Encryption ..... AES 128-bit to the wireless reader
- Communications ..... Capable of Secure Socket Layer (SSL) between portal gateways and C•CURE 9000 host
- Communication Range ..... 30.48 m (100 ft) radius
- Range Extension ..... Gateway to gateway
- Power ..... 12 VDC
- I/O Port ..... One non-dedicated
- USB Port ..... One

### Recommended Hardware/Software Requirements for C•CURE 9000 Client

- C•CURE 9000 ..... Version 1.91 patch 2
- Processor ..... Intel Pentium® IV/Xeon, 3.4 GHz or higher with 64-bit CPU
- RAM ..... 4 GB
- Free Hard Disk Space
- Required for Software ..... 2 GB
- Disk Drive ..... 160 GB at 7200 RPM
- Screen Resolution ..... 1024 x 768
- Monitor/Video Adapter Board ..... 17 inch monitor; SVGA (1024 x 768), 64 MB, DirectX 9.0b; true color support for badging; dedicated 256 MB accelerated video card
- DVD/CD-ROM Drive ..... 48x
- Network Adaptor Card ..... Intel EtherExpress, 3 Com, 10/1000 MB/sec
- Operating System
- Compatibility ..... Windows® XP Professional (Service Pack 2, 32-bit), Windows Vista Business or Enterprise Edition

Product offerings and specifications are subject to change without notice. Actual products may vary from photos. Not all products include all features. Availability varies by region; contact your sales representative. Certain product names mentioned herein may be trade names and/or registered trademarks of other companies.

Software House, iSTAR, and C•CURE are registered trademarks of Tyco International and its related Companies.

© 2009 Tyco International Ltd. and its respective companies. All rights reserved. SH0148-DS-200912-R02-A4-EN