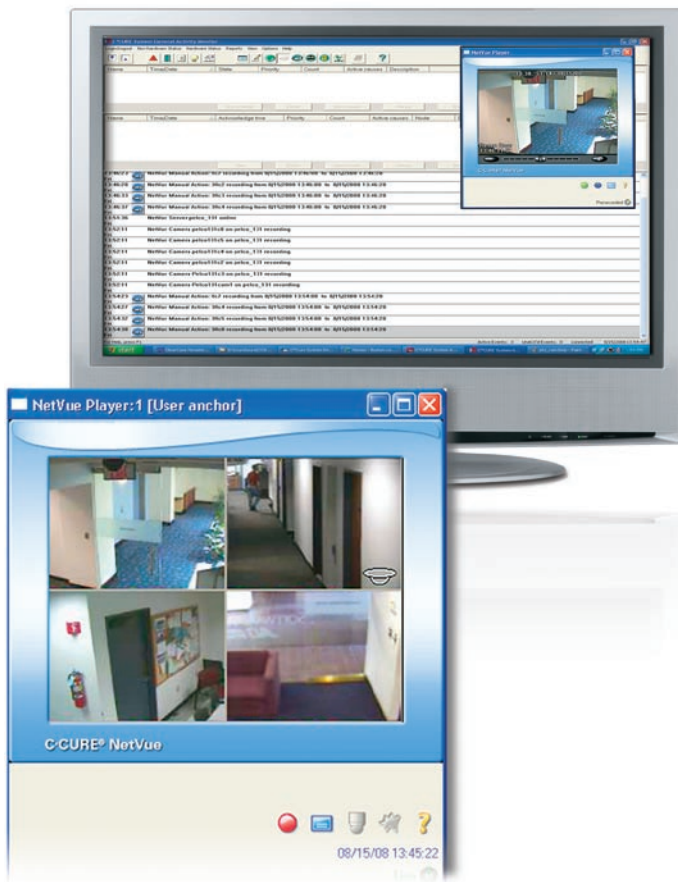


C•CURE® NetVue

Integrated Access Control and Digital Video Solution

Features That Make a Difference:

- The Application Programming Interface (API) in C•CURE® 800/8000 provides seamless communication with multiple video systems:
 - American Dynamics® Intellex® digital video management systems and VideoEdge® NVR
 - NICE Systems - Harmony
 - Verint Systems (Loronix) - CCTVware and Nextiva
 - Integral Technologies - DS XPress and DVXi
 - Pelco - DX8100
- View live and/or recorded video from multiple cameras via camera/dome icons on maps or pop-up windows
- Pan/tilt/zoom (PTZ), iris, and focus controls via switcher
- Operator and action triggered support for PTZ presets and patterns based upon event, alarm, input¹, or video tour (Intellex only)
- Video tour start and stop time included in journal report (Intellex and NICE only)
- Replay up to four cameras in quad format at the same time (Intellex only)
- Display up to four live videos on event activation
- Toggle between regular (1x1) and large (4x4) window formats
- User-selectable positioning/anchoring of windows
- Security features ensure that the original recorded video cannot be altered in any way (Intellex only)
- Supports operator restrictions based on camera and video operations
- View recorded video clips from event tiles on the monitoring station



C•CURE NetVue Player detail

C•CURE NetVue is an option within C•CURE 800/8000 that provides seamless integration with a variety of video systems. The integration allows you to tie an event generated on C•CURE 800/8000 to a video clip and automatically activates events based on alarms received from the video system.

Using C•CURE NetVue, you can double-click on camera icons next to events, such as “Door Propped Open”, which are generated on the C•CURE 800/8000 Monitoring Station. When the C•CURE NetVue window opens, you can watch live video or rewind the video clip to the point where the event occurred. The video clips can easily be saved as .AVI files for archiving or emailing.

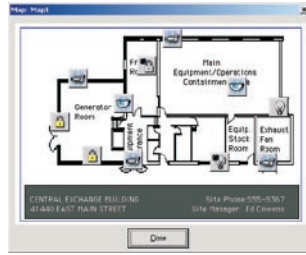
C•CURE 800/8000’s Monitoring Station displays a video tile for every event. In addition to the date and time stamp, these tiles can contain one or more of the following icons: cardholder image, door, input/output, NetVue, and maps.

Any C•CURE 800/8000 event can trigger a NetVue action, such as storing a video clip with pre- and post-event times. NetVue leverages the tile format by allowing you to double-click on the NetVue icon. This opens a window in which you can view the video clip using controls similar to a VCR. You can also use the export button on the popup window to save video clips in standard file formats like .AVI.

(1) Operator and action triggered support for PTZ presets based upon input (NICE only)

Maps

C•CURE 800/8000's Monitoring Station can display maps (on event activation) with NetVue icons (camera, dome, and more) providing you with the ability to view live video. By double-clicking the camera/dome icon, a NetVue window appears showing the live video feed. In the case of a dome, an additional PTZ GUI appears to allow you to control domes that are interfaced to video switchers.



Journal Replay

Unique identifiers associated with NetVue video clips are captured in the C•CURE 800/8000 journal. You can click on the NetVue icon from the journal replay to observe the associated video segment.

Video Tour and Video Views

The video tour feature allows you to view live video with the help of NetVue Player from a pre-configured collection of cameras. NetVue Player displays streams of live video in an adjustable NetVue window. Starting with the first camera, video displays for a fixed amount of time then the tour automatically advances to the next camera. This process continues until the last camera in the tour is reached or indefinitely if looping is enabled. You can pause or alter the direction of the tour while still retaining full access to recording, text overlay, PTZ, and bi-directional functionality.

The video view feature allows you to pre-select a group of cameras, position them in a grid (1x1, 2x2, 3x3, or 4x4), indicate the NetVue Player size, and determine its initial text overlay status. You can then save this collection as a video view for future viewing.

Presets/Patterns

NetVue users interfacing with NICE systems can PTZ the dome to move to a preset position based upon the operator's input. NetVue users interfacing with Intellex can establish presets and patterns via an operator, action, or tour stop configuration. The dome can move to a preset position or follow a pattern based upon an event, alarm, input, or video tour.

Alarm Management

Gain administrative control over alarm activity by assigning privileges to operators who have access to view NetVue alarms or alarm groups. With C•CURE 800/8000, you can disarm a NetVue alarm or alarm group once verified. This eliminates the large number of alarms that were once displayed on the general activity monitor.

C•CURE 800/8000 Server Recommended Minimum Requirements

Processor

Model Number 1 through 10 1.5 GHz Intel Pentium III or higher
 Model Number 20 through 40 1.8 GHz Intel Pentium III or higher
 Model 8000 and 8000 Plus 2.4 GHz Intel Pentium IV or higher
 Free Hard Disk Space. 3.0 GB

Memory

Model Number 1 through 40 1 GB RAM
 Model 8000 and 8000 Plus 2 GB RAM
 Network Card 10/100Base-T
 CD-ROM Drive 10X
 Monitor/Video Adapter Board 17" SVGA (1024 x 768), 64 MB RAM
 Operating System Windows® 2003 Server (Service Pack 2), Windows XP Professional (Service Pack 3)

Mouse PS/2 bus type, USB

Ports Two serial, one parallel, USB (with C•CURE 800/8000 v8.x a USB port is required)

Backup Tape or CDRW

Modem 56.7 Kbps

Sentinel Supplied by Software House

Digiboard. 8 port (Models 20/30/40)

C•CURE 800/8000 Client Recommended Minimum Requirements

Processor 2 GHz Intel Pentium or higher

Free Hard Disk Space 2.0 GB

Memory 1 GB RAM

Network Card 10Base-T

CD-ROM Drive 10X

Monitor/Video Adapter Board. 17" SVGA (1024 x 768), 64 MB RAM

Operating Systems Windows 2003 (Service Pack 2), Windows XP Professional (Service Pack 3)

Mouse PS/2 bus type, USB

Video System Minimum Requirements

Intellex DVMS v3.2

Intellex LT and Ultra. v4.0

VideoEdge NVR 2.0.4.042

Verint (Loronix) v4.0

NICE Systems v6.x

Integral Technologies

(DS Xpress and DVXi) v4.1.x (requires C•CURE 800/8000 v7.0 or higher)

Pelco DX8100 v1.1x or higher

Application Programming Interfaces (API) Minimum Requirements

Intellex. v4.2

VideoEdge. v2.09

NICE Systems. v10.0

Verint (Loronix) v4.32

Verint (Nextiva) v5.1 SP2

Integral Technologies

(DX Xpress and DVXi) v1.3.0.162

Pelco DX8100 v3.2.4

Note: It is recommended that customers use the most current firmware release for each controller.

Product offerings and specifications are subject to change without notice. Actual products may vary from photos. Not all products include all features. Availability varies by region; contact your sales representative. Certain product names mentioned herein may be trade names and/or registered trademarks of other companies.